

DAY BY DAY ITINERARY OF THE MILLENNIUM YACHT

THURSDAY:

SUNDAY: Baltra: Santa Cruz Island



Your flight from Quito (via Guayaquil) to the Galapagos will land at Baltra Airport. Upon arrival, your guide will receive you. He will collect your luggage and escort you on the short bus ride to Puerto Ayora, capital of Santa Cruz Island, where Millennium yacht is waiting for you. The crew will welcome you on board. After a briefing and a light lunch, you'll have your first site visit.

PM: Nesting Center Fausto LLerena



This afternoon, we'll visit the Nesting Center "Fausto LLerena" where we'll learn about the land iguana captive breeding programs and all about the efforts to protect the islands' rare population of giant tortoises, including the island's most famous resident, a 70-year-old tortoise- known as "Lonesome George," thought to be the last surviving member of a subspecies from Santa Cruz Island. Also we'll see the tiny new born tortoises and sit alongside the huge adults in their corrals. We'll continue with a walk through a giant prickly-pear cactus forest, followed by a stroll along the main street of Puerto Ayora where merchants display a variety of handicrafts.

MONDAY:

AM: Rabida Island



Disembark and make a wet landing on the mesmerizing red beaches of Rabida Island. Walk along the beach past sea lions, marine iguanas and a variety of birds, including mockingbirds, yellow warblers and Darwin's finches. Continue inland to the island's unique saltwater pond to search for the island's famous bright pink flamingos. There may also be time to snorkel and relax on the beach.

PM: Chinese Hat



Chinese hat is a tiny Island just off the southeastern tip of Santa Cruz Island is less than a quarter of 1 sq km in size. It is a fairly recent volcanic cone, which accounts for its descriptive name, it has the shape of a down-facing Chinese hat. The hat shape is best appreciated from the northside. Opposite Sombbrero Chino, on the rocky shoreline of nearby Santa Cruz, Galapagos penguins are often seen. There is a small sea lion cove on the north shore, where boats anchor and land at the visitor site. A 400 m. trail goes around the cove and through a sea lion colony and marine iguanas cover the landscape. The volcanic scenery is attractive, and there are good views of the cone. There are snorkeling and swimming opportunities in the cove.

TUESDAY:

AM: Bartolome Island



Bartolome Island itself is famous for its 'Pinnacle Rock' - probably the most photographed volcanic formation in the islands. Climb up a long wooden staircase comprising 360+ steps to the viewpoint on the summit that offers breathtaking views to nearly all the central islands in the archipelago. A short dinghy ride after the walk will allow you to photograph the Galapagos Penguins that live along the coastline.

The orange beach and surrounding coastline is great for swimming and snorkeling and there is the opportunity of seeing penguins, sea lions, rays, reef fish and white-tipped reef sharks. Lunch will be served with one of the most amazing volcanic backdrops found anywhere in the archipelago.

On this tour look out for: Penguins, Lava lizards, Snakes, Marine iguanas, Frigate birds, Blue footed boobies, Brown noddie terns, Brown pelicans, White tip sharks, Sting rays, Sea turtles.

PM: Black Turtle Cove



The excursion to Black Turtle Cove, (which is a salt-water lagoon) provides passengers with a "panga" ride through the different mangrove species, red, white and black. During this excursion, the outboard motor of the small boat is turned off. This allows, in its quiet crystal clear waters, the close observation of Sea Turtles, White Tipped Reef Sharks, Spotted Eagle Rays, and Yellow Rays.

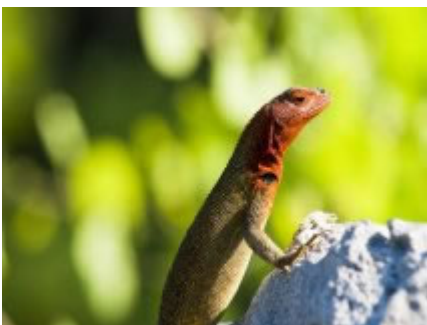
WEDNESDAY:

AM: South Plaza



A small but in the winter season a very colorful uplifted island just off the east coast of Santa Cruz Island. South Plaza has a unique landscape of Sesuvium plants and Opuntia cacti and provides some of the most interesting plant and wildlife observation spots in Galapagos. Land iguanas are easily seen from the trail, normally lazing in the shade of the cacti. Swallow-tailed gulls and frigate birds use the rising air off the sea to glide effortlessly over the escarpment. Towards the far end of the island a 'bachelor colony' of male sea lions can be observed. You will eat lunch anchored close to the rocky seashore inhabited by a large colony of playful sea lions.

PM: Santa Fe



Located south of Santa Cruz Island, a walk around this dry, rugged island offers the chance of spotting the Santa Fe Land Iguana that is only found here. The turquoise water of the stunning bay where you will be anchored offers the opportunity to snorkel with sea lions. You will land on the sandy beach of a beautiful protected bay where you will be greeted by colonies of sea lions. A short circular trail takes you along the cliff edge where you can most likely spot the iguanas as well as many lava lizards and even the Galapagos Hawk. The trail brings you back round onto a second beach that is also inhabited by sea lions and blue footed boobies sit on the rocks. Snorkel in the bay with sea lions and admire the many species of reef fish and occasionally sea turtle and rays. Lunch will be served whilst still anchored in the bay.

On this tour look out for: Sea lions, Land iguanas, Lava lizards, Swallow-tailed gulls, Lava gulls, Shearwaters, Storm petrels, Marine iguanas, Great frigate birds, Blue footed boobies, Brown noddie terns, Brown pelicans, White tip sharks, Sting rays, Sea turtles.

THURSDAY: San Cristobal Island:

AM: Interpretation Center:



San Cristóbal is the easternmost island in Galapagos; on its southwestern side is the own town of Puerto Baquerizo Moreno, the capital of the providence of Galapagos. On Puerto Baquerizo Moreno is the Interpretation Center newly opened by the Galapagos National park in 1998, which is truly an extraordinary contribution to the information and education of the islands communities and the travelers; its 80% is focus in the anthropology of the Galapagos, the 20% is scientific.



Transfer to the Airport to take your flight to Mainland

CONTACT US

Address: Asunción 105 and Bogotá (Guayaquil - Ecuador)

Phone: 593-4 2345446 / 593-4 2346387 / 593-9-9428626 **Fax:** 593-4-2346223

E-mail: info@millenniumyacht.com